

Architecture has been part of the program of regular instruction at Norwich University from the institution's founding, listed in the catalog of 1820. In 1990, Robert Schmidt, a faculty member in Engineering, and the first students that fall, founded the formal Architecture Program at Norwich, which has since has grown into the School of Architecture + Art (SoA+A). We celebrate the 25th anniversary of the first graduating class.



Chaplin Library Renovations

The School moved to its own building in 1993 with the renovation of the University's original library, beginning with an intensive weekend student charrette. Winning students from each level served on the building committee with the faculty.

**Northfield, VT
Spring 1993**

SCHEMATIC DESIGN



CHAPLIN LIBRARY RENOVATIONS

FOR THE

SCHOOL OF ARCHITECTURE

NORWICH UNIVERSITY

23 APRIL 1993

NORTHFIELD, VT

TEAM: Norwich University
Faculty and Students
FRM
Breadloaf

Freeman French Freeman, Inc.
Duncan-Wisniewski
B R + A/S
Servidio

Chaplin Library Renovations

During the five months of renovation, architecture students worked closely with the contractor, construction crew, and architects. This shared participation fostered student leadership and teamwork and laid the foundations of our design/build program.

Northfield, VT
Spring 1993



Day Camp and Shelter

1400-square-foot structure serves as a day camp and shelter for the recreation fields

**Randolph, VT
Spring 2001**



Day Camp and Shelter

1400-square-foot structure serves as a day camp and shelter for the recreation fields

Randolph, VT
Spring 2001



Ice Rink Center

1600 square foot building contains team locker-rooms, bathrooms, a snack bar, and space for putting on skates. It also includes a rink-side porch for viewing games.

Randolph, VT

Fall 2003

Spring 2004



Ice Rink Center

Passive solar with a wood-stove as back-up heat, it runs entirely on bio-fuels when occupied

Randolph, VT

Fall 2003

Spring 2004



Outdoor Classroom

Completed by Norwich students over a 5 year period with help from local community members and Twinfield students

Marshfield, VT
Spring 2007



Outdoor Classroom

Curriculum includes outdoors studies and activities for students in K-12.

Marshfield, VT
Spring 2007



Sukkah

temporary sacred space constructed every autumn for the festival of Sukkot

Montpelier, VT
Spring 2007



Library Addition

A local library needed a bathroom, a kitchen, and an accessible entrance.

Roxbury, VT
Spring 2008



Library Addition

Students added a passive solar reading space.

Roxbury, VT
Spring 2008



Shelving System for Kreitzberg Library

Northfield, VT

Students designed and built this shelving system for Kreitzberg Library's architectural periodical collection.

Fall 2008



Shelving System for Kreitzberg Library

The front display of the monthly periodicals is based on principles of 'flocking' exhibited in nature by schools of fish and birds in flight.

Northfield, VT

Fall 2008



T-Box

auctioned off to two art collectors to raise money for the school's design/build program

Brookfield, VT
Spring 2010



T-Box

auctioned off to a local architect to raise money for the school's design/build program

Montpelier, VT
Spring 2010



Writer's Hut

**Strafford, VT
Spring 2010**



Writer's Hut

**Strafford, VT
Spring 2010**



Project EMBARC (Energy Mobile Building Arts Research Center)

A mobile, solar-powered laboratory converted from a 20' intercontinental steel shipping container to support field data collection for geological sciences

Northfield, VT
Summer 2010



Project EMBARC (Energy Mobile Building Arts Research Center)

insulated, integral water collection from roof, natural day-lighting,
passive cooling, integrated leveling foundation system for rough terrain

Northfield, VT
Summer 2010



RAEV House

1000 sf super energy efficient solar prototype house designed to accommodate a family of four

Northfield, VT
Summer 2011



Delta T-90 House (solar powered, affordable for cold climates)

- First Place Awards in Affordability and Energy Balance, Solar Decathlon 2013
- U.S. EPA 2015 Environmental Merit Award, Region 1
- People's Choice Award from the Vermont chapter of the American Institute of Architects

Irvine, CA
Fall 2013



The Delta T-90 House (solar powered, affordable for cold climates)

- Factory produced high performance modular housing – 1000 sq. ft. / 2 bdrm. / 1 bath / high ceilings
- 12 day production time in factory, 3 day set-up time on site



Delta T-90 House (solar powered, affordable for cold climates)

- Now used as learning space at Frank Lloyd Wright's Westcott House
- Received a Museums for America grant from the Institute of Museum and Library Services for the melding of 20th century architecture and modern green technology for the benefit of the community."

Springfield, OH
Spring 2014

ARCHISTREAM



Archistream

- Rehabbed 1969 Airstream Globetrotter trailer into mobile classroom, design gallery, resource center
- Citation Award-winner in the 2014 AIAVT Excellence in Architecture Design Awards

Roads of New England
Spring 2014



Archistream

ECHO, Burlington, VT
Summer 2014

- During its stay at the ECHO Lake Aquarium and Science Center in Burlington from June – August 2014, over 17,400 students and adults encountered the Archistream.



Outdoor Classroom

- Partnered with Northfield Middle High School STAR Program
- Citation Award for Excellence from the American Institute of Architects, New England chapter

Northfield, VT
Spring 2015



Outdoor Classroom

- Accommodates thirty students, serves as a base-camp for day hikes and CC track meets
- Uses a sophisticated cable and turnbuckle-tensioned king-post beam to span the entire twenty-four feet length

Northfield, VT
Spring 2015



CASA 802

**Shelburne, VT
Spring 2016**

- 324 sf home that provides sustainable, beautiful housing for people from all income levels
- CASA's immediate and long-term objective is to develop a regionally derived, affordable housing model that offers an alternative to the mobile home.



CASA 802

Shelburne, VT
Spring 2016

- Aims to fit into its surroundings with its gabled form and material palette, while simultaneously introducing a new way of living through modern detailing and a reduced footprint.
- AIA VT People's Choice Award Winner



LineSync Architecture
Wheel Pad
Photo by Carolyn L. Bates

Wheel Pad

Summer 2016

- 200 sq.ft. accessible bedroom and bathroom that can be temporarily attached to an existing home
- Designed by LineSync Architecture; Prototype Constructed by Norwich University



LineSync Architecture
Wheel Pad
Photo by Carolyn L. Bates

Wheel Pad

Summer 2016

- Design help from home health nurses, physicians, physical and occupational therapists.
- As a result, it has fixtures installed at a lower height, a spacious bathroom with a double swing door, and a ceiling track that serves as a Hoyer lift.



Habitat for Humanity Passive House

- Design: Stonorov Workshop
- Construction Drawings: Norwich University School of Architecture + Art

East Montpelier, VT
Spring 2016



Habitat for Humanity Passive House

- Efficiency Vermont Best of the Best Awards, Honor Award
- Passive House National Awards, Honorable Mention

East Montpelier, VT
Spring 2016



SuCASA

- 288-square-foot home built with nearly all locally sourced, sawn and produced materials

East Montpelier, VT
Spring 2017



SuCASA

- sense of interior spaciousness preserved with a Murphy bed and a single burner for cooking that can be put away to make counter space
- Intention was to make an available, turnkey, affordable, high-performance tiny house

East Montpelier, VT
Spring 2017



NEST Outdoor Classroom

- The NEST outdoor classroom is the centerpiece of are-envisioned playground, and provides a space for outdoor learning, imaginative play, science programs about the production and growing of food and physical exploration.

Montpelier, VT
Spring 2018



NEST Outdoor Classroom

- Design excellence Merit Award from the American Institute of Architects, New England Chapter
- Citation Award in the Education category from the American Institute of Architects, Vermont chapter

Montpelier, VT
Spring 2018



Wheelpad XL

- 200 sq.ft. accessible bedroom and bathroom that can be attached to an existing home.
- Developed for a military veteran in Jericho, VT who has amyotrophic lateral sclerosis.

Jericho, VT
Summer 2018



LIFT Houses

- Developed with community partners to create safe, healthy, affordable and sustainable homes for vulnerable Vermonters.
- Two new, custom-designed energy-efficient small homes now occupy a once-vacant City lot.

Barre, VT
Spring 2019 – Fall 2021



LIFT Houses

Barre, VT

Spring 2019 – Fall 2021

- Honor Award from the Vermont chapter of the American Institute of Architects
- Housing vouchers are paired with the dwellings to serve people who have mental illness and/or are at high risk of homelessness. A Washington County Mental Health Services clinic stands less than a mile away..



Tiny Home Village

- A group of architecture and construction management students designed two prototype homes
- An architecture class created a set of construction documents for each of the two houses as well as 2 site plans for Tiny House Village

Middlebury, VT
Fall 2020 – Spring 2021



Community Connections Kiosk

- Located on Depot Square, Kiosk provides shelter, way finding, and a community history..

Northfield, VT

Fall 2020 – Spring 2022



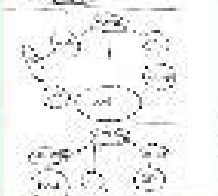
Community Connections Kiosk

- This collaborative project between NU School of Architecture + Art, School of Engineering, and the Northfield Energy Commission is inspired by local historic architecture and a study of biophilic design..

Northfield, VT
Fall 2020 – Spring 2022

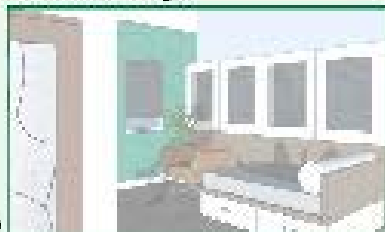
Sketches/Concepts

1.0000 1.0000 1.0000 1.0000



Veteran Room Proposal
Laymore Declue
8/24/2021

Views/Rendings



- BOARD OF EVENTS
- SHELVING STORAGE WITH COUNTER/SINK ROOM
- LIGHT BY OR PRIETTY
- LIGHTING CONTROL
- AIR AND CLIMATE CONTROL APPLIANCES

Plan



The Veterans' Place Renovations and Master Plan

Northfield, VT

Fall 2021 – Spring 2022

- Architecture, Engineering, and Construction Managements students and faculty are providing design services and construction documents
- Architecture students creating as-built drawings and resident room designs

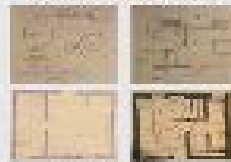
Sketches/Concepts



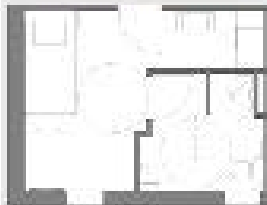
Wood™ The room Luxury Bed



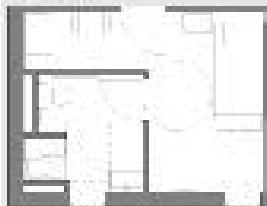
ADA Bathroom Code



Sketch Options



Iteration #1



Iteration #2

Veterans' Room Proposal
Karelyn Prack
9/24/2021

Views/Renderings



Perspective with Earth Tones



Perspective with Neutral Tones



Plan Perspective



Plan Perspective

Plans/Designs

- Bed height to 28" (ADA range is 27" - 33")

The bathroom follows ADA Coding along with the bedroom

- flooring would be low-mid range (hardwood laminate tile and thin carpet)

- The flooring and furniture would have level of accessible and meeting office needs.

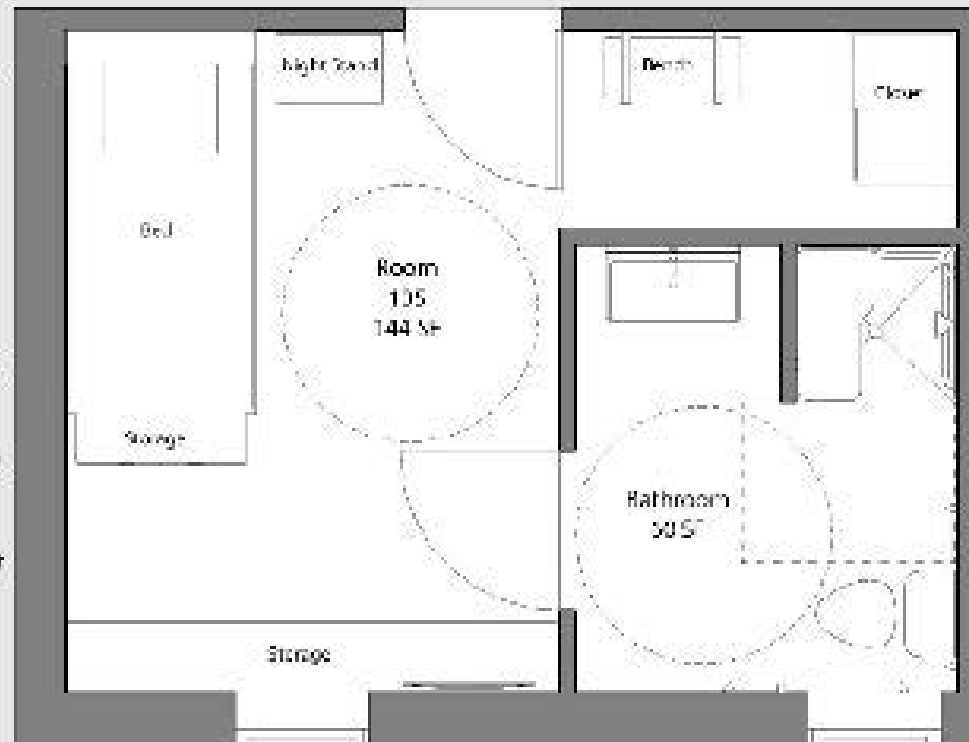
- Wall color would be a strong color with low intensity (ADA needs shade)

- For controlling lighting there can be a dimmer switch or using two separate curtains. A light airy layer and a thick darker layer to roll off throughout the day.

- Walls would be sound proof to make the rooms quiet

- Have indoor plants and white noise machines to help with sensory

- The room is suppose to be easy comfortable with made office.



Scale
1/4" = 1'-0"

The Veterans' Place Renovations and Master Plan

Northfield, VT

Fall 2021 – Spring 2022

- Engineering students provide all required structural and MEP coordination
- Construction Management students will build out one room
- Architecture students will develop a phased master plan for overall facility

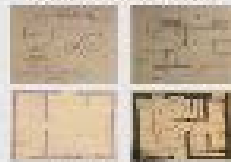
Sketches/Concepts



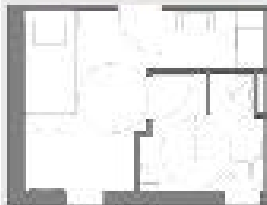
Two+ Bed room Luxury Bed



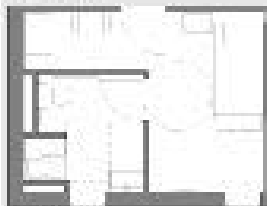
ADA Bathroom Code



Sketch Options



Iteration #1



Iteration #2

Veterans' Room Proposal
Karelyn Prack
9/24/2021

Views/Renderings



Perspective with Earth Tones



Perspective with Neutral Tones



Plan Perspective



Plan View Perspective

Plans/Designs

- Bed height to 29" (ADA range is 27" - 33")

The bathroom follows ADA Coding along with the bedroom

- flooring would be low-mid range (hardwood laminate tile and tile carpet)

- The flooring and wall covering would have level of absorbing outdoor noise or noise noise.

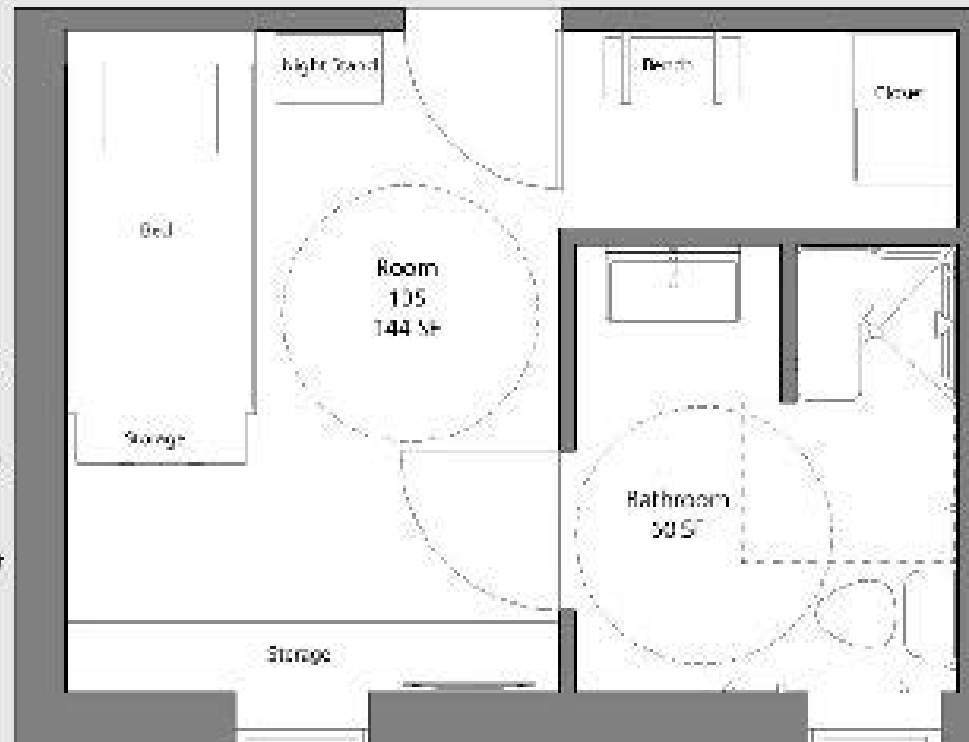
- Wall cover would be a strong color with low intensity (ADA norms shade)

- For controlling lighting there can be a dimmer switch or using two separate curtains, a light airy layer and a thick darker layer to roll off throughout the day

- Walls would be sound proof to make the rooms quiet

- Have indoor plants and white noise machines to help with sensory

- The room is suppose to be easy comfortable with a made in life.



Scale
1/4" = 1'-0"

The Veterans' Place Renovations and Master Plan

Northfield, VT

Fall 2021 – Spring 2022

- Engineering students provide all required structural and MEP coordination
- Construction Management students will build out one room
- Architecture students will develop a phased master plan for overall facility